

Goldendrill Rotary



Rotary Drilling/Vibrator Hose - API 7K FSL 1 & ISO 14693

- Application:** Flexible connection between standpipe and swivel (rotary drilling) or between pump and standpipe (rotary vibrator) for pumping mud at very high pressure in oil drilling and exploration works
- Tube:** Oil and abrasion resistant synthetic rubber
- Cover:** Black synthetic rubber with high abrasion, weather and heat resistance
- Reinforcement:** Multiple High Tensile Steel Wire Spiral Layers
- Temperature:** -4°F to 212°F (Continuous Service Range)*
- Fluids:** Water and mud, mineral oils, glycols and polyglycols, mineral oils in aqueous emulsion
- Approvals:** MSHA, API 7K FSL 1

* Min. hose temperature resistance according to ISO 10619-2 method:

- Tube (internal mud): -50°F (-46°C)
- Cover (environment): -67°F (-55°C)

Features:

- Highly robust and flexible, compact spiral hose structure
- Extremely high ozone, weather and abrasion resistant hose cover
- Flame retardant (MSHA) and antistatic properties
- Coupling solution uses a distinctive double skive, crimped-on hose fitting, creating a highly robust, safe connection
- Highly robust and flexible, compact spiral hose structure
- Extremely high ozone, weather and abrasion resistant hose cover
- Flame retardant (MSHA) and antistatic properties
- Coupling solution uses a distinctive double skive, crimped-on hose fitting, creating a highly robust, safe connection

PART #	SIZE			R.O.D.		O.D.		MAX W.P.		BURST		MIN.BEND		WEIGHT		FITTINGS
	DN	dash	inch	mm	inch	mm	inch	bar	psi	bar	psi	mm	inch	g/m	lb/ft	Std1
H11003051*	51	- 32	2	64.6	2.54	68.6	2.70	345	5000	863	12510	700	27.56	4642	3.12	IP+M01500-32
H11003063*	63	- 40	2-1/2	77.5	3.05	81.5	3.21	345	5000	863	12510	800	31.50	5856	3.94	IP+M01500-40
H11003076*	76	- 48	3	93.3	3.67	97.3	3.83	345	5000	863	12510	1000	39.37	8684	5.84	IP+M01810-48
H11003089*	89	- 56	3-1/2	114.6	4.51	120.6	4.75	345	5000	863	12510	1372	54.00	15906	10.69	IS+M02610-56
H11003102*	102	- 64	4	132.7	5.22	139.7	5.50	345	5000	863	12510	1372	54.00	20571	13.82	IS+M02600-64

GRADE E	DN	dash	inch	mm	inch	mm	inch	bar	psi	bar	psi	mm	inch	g/m	lb/ft	Std1
H11004051*	51	- 32	2	68.4	2.69	72.4	2.85	517	7500	1293	18750	800	31.50	6484	4.36	IP+M01800-32
H11004063*	63	- 40	2-1/2	81.3	3.20	85.3	3.36	517	7500	1293	18750	900	35.43	8226	5.53	IP+M01810-40
H11004076*	76	- 48	3	97.9	3.85	101.9	4.01	517	7500	1293	18750	1200	47.24	12357	8.30	IS+M02800-48
H11004089*	89	- 56	3-1/2	118.0	4.65	124.0	4.88	517	7500	1293	18750	1372	54.00	19007	12.77	IS+M02800-56

Click for directions:

New England Region
Liverpool, NY 13088
(315) 451-2770

Great Lakes Region
Cheektowaga, NY 14225
(716) 684-8224

Mid-Atlantic Region
Charlotte, NC 28273
(704) 588-9920

Midwest Region
St. Louis, MO 63111
(314) 256-0833

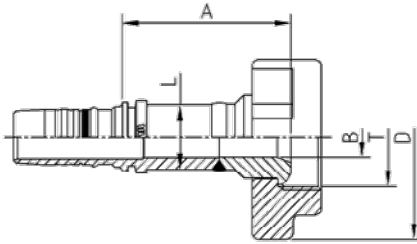
Gulf Coast Region
Pasadena, TX 77503
(281) 930-7777

Connect with us:

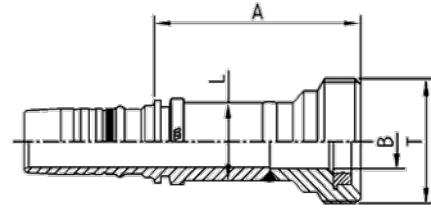


www.jgbhose.com

602 Hammer Unions and Drilling Connections

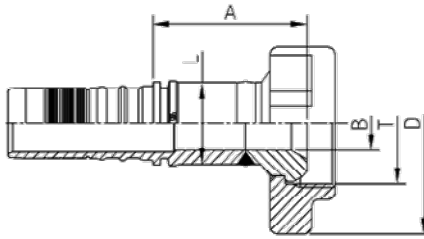


602 Male Hammer Union

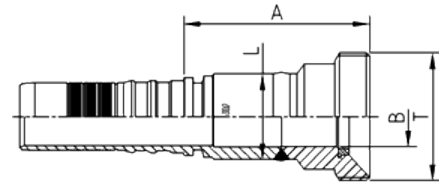


602 Female Hammer Union

FITTING TYPE	PART #	HOSE BORE			Thread.	DIMENSIONS			
		DN	dash	inch	T	B	A	D	L
Hammer Union Male	M35610-48-64F602	76	-48	3"	4"	87.3	187	256	114.3
	MA5610-64-64F602X	102	-64	4"	4"	87.3	212	264	115
Hammer Union Female	M45610-48-64F602	76	-48	3"	4"	87.3	212	-	114.3



602 Male Drilling Connection



602 Female Drilling Connection

FITTING TYPE	PART #	HOSE BORE			Thread.	DIMENSIONS			
		DN	dash	inch	T	B	A	D	L
Connection Male	MA5610-56-64F602	89	-56	3.1/2"	4"	87.3	206.5	264	115
	MA5610-64-64F602X	102	-64	4"	4"	87.3	212	264	115
Connection Female	MB5610-56-64F602	89	-56	3.1/2"	4"	87.3	212.5	-	115
	MB5610-64-64F602X	102	-64	4"	4"	87.3	218	-	115

Note: Thread dimension to be considered as the union size

Click for directions:

New England Region
Liverpool, NY 13088
(315) 451-2770

Great Lakes Region
Cheektowaga, NY 14225
(716) 684-8224

Mid-Atlantic Region
Charlotte, NC 28273
(704) 588-9920

Midwest Region
St. Louis, MO 63111
(314) 256-0833

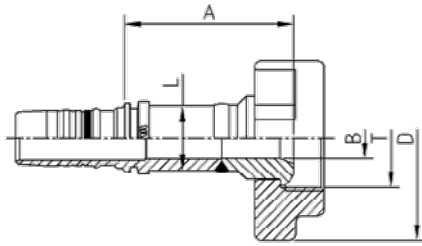
Gulf Coast Region
Pasadena, TX 77503
(281) 930-7777

Connect with us:

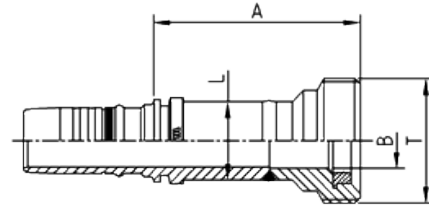


www.jgbhose.com

1002 Hammer Unions and Drilling Connections

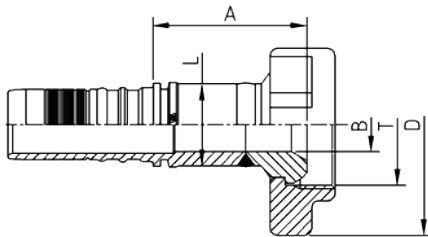


1002 Male Hammer Union

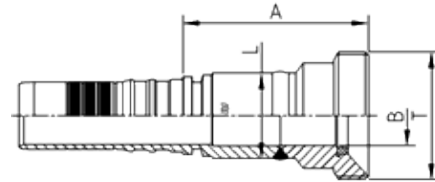


1002 Female Hammer Union

FITTING TYPE	PART #	HOSE BORE			Thread. T	DIMENSIONS			
		DN	dash	inch		B	A	D	L
Hammer Union Male	M35610-48-64F1002	76	-48	3"	4"	80.1	187.5	256	114.3
Hammer Union Female	M45610-48-64F1002	76	-48	3"	4"	80.1	212.5	114.3	114,3



1002 Male Drilling Connection



1002 Female Drilling Connection

FITTING TYPE	PART #	HOSE BORE			Thread. T	DIMENSIONS			
		DN	dash	inch		B	A	D	L
Connection Male	MA5610-56-64F1002	89	-56	3.1/2"	4"	80.1	200.5	264	114.3
	MA5610-56-80F1002	89	-56	3.1/2"	5"	103.2	226	310	141.3
	MA5610-56-80F1002	89	-56	3.1/2"	5"	103.2	226	310	141.3
	MA5610-64-64F1002	102	-64	4"	4"	80.1	208	264	114.3
	MA5610-64-80F1002	102	-64	4"	5"	103.2	228.5	310	141.3
Connection Female	MB5610-56-64F1002	89	-56	3.1/2"	4"	80.1	210	-	114.3
	MB5610-56-80F1002	89	-56	3.1/2"	5"	103.2	225	-	141.3
	MB5610-56-80F1002	89	-56	3.1/2"	5"	103.2	225	-	141.3
	MB5610-64-64F1002	102	-64	4"	4"	80.1	217	-	114.3
	MB5610-64-80F1002	102	-64	4"	5"	103.2	227.5	-	141.3

Note: Thread dimension to be considered as the union size

Click for directions:

New England Region
Liverpool, NY 13088
(315) 451-2770

Great Lakes Region
Cheektowaga, NY 14225
(716) 684-8224

Mid-Atlantic Region
Charlotte, NC 28273
(704) 588-9920

Midwest Region
St. Louis, MO 63111
(314) 256-0833

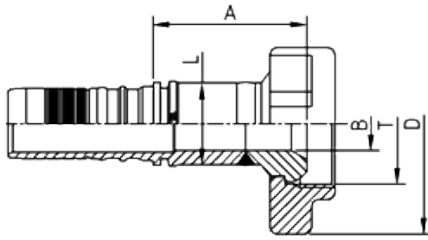
Gulf Coast Region
Pasadena, TX 77503
(281) 930-7777

Connect with us:

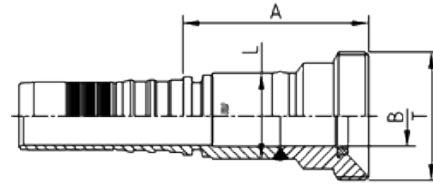


www.jgbhose.com

1003 Drilling Connections



1003 Male Drilling Connection



1003 Female Drilling Connection

FITTING TYPE	PART #	HOSE BORE			Thread.	DIMENSIONS			
		DN	dash	inch		T	B	A	D
Connection Male	MA5610-56-64F1003	89	-56	3.1/2"	4"	80,1	311	304	114.3
	MA5610-64-64F1003	102	-64	4"	4"	80.1	318	304	114.3
Connection Female	MB5610-56-64F1003	89	-56	3.1/2"	4"	80.1	244	-	114.3
	MB5610-64-64F1003	102	-64	4"	4"	80.1	251	-	114.3

Note: Thread dimension to be considered as the union size

Click for directions:

New England Region
Liverpool, NY 13088
(315) 451-2770

Great Lakes Region
Cheektowaga, NY 14225
(716) 684-8224

Mid-Atlantic Region
Charlotte, NC 28273
(704) 588-9920

Midwest Region
St. Louis, MO 63111
(314) 256-0833

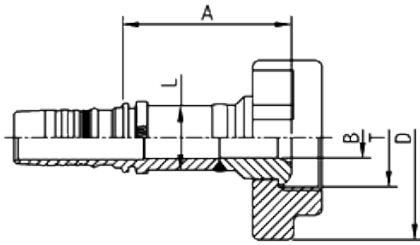
Gulf Coast Region
Pasadena, TX 77503
(281) 930-7777

Connect with us:

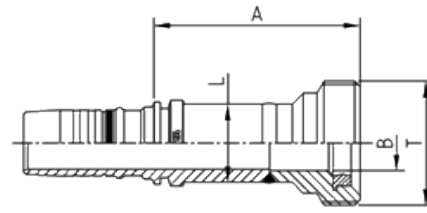


www.jgbhose.com

1502 Hammer Unions and Drilling Connections

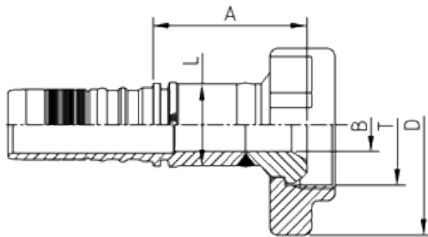


1502 Male Hammer Union

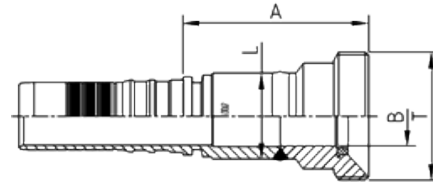


1502 Female Hammer Union

FITTING TYPE	PART #	HOSE BORE			Thread.	DIMENSIONS			
		DN	dash	inch		T	B	A	D
Hammer Union Male	M35610-48-64F1502	76	-48	3"	4"	80.1	238.5	304	114.3
Hammer Union Female	M45610-48-64F1502	76	-48	3"	4"	80.1	239.5	-	114.3
	M45610-32-32	51	-32	2"	4.1/8" - 3 ACME	41	100	-	81



1502 Male Drilling Connection



1502 Female Drilling Connection

FITTING TYPE	PART #	HOSE BORE			Thread.	DIMENSIONS			
		DN	dash	inch		T	B	A	D
Connection Male	MA5610-56-64F1502	89	-56	3.1/2"	4"	80.1	245	304	114.3
	MA5610-64-64F1502	102	-64	4"	4"	80.1	252	304	114.3
Connection Female	MB5610-56-64F1502	89	-56	3.1/2"	4"	80.1	245	-	114.3
	MB5610-64-64F1502	102	-64	4"	4"	80.1	252	-	141.3

Note: Thread dimension to be considered as the union size



Liverpool Location ISO 9001:2015 Certified QMS by Intertek



Click for directions:

New England Region
Liverpool, NY 13088
(315) 451-2770

Great Lakes Region
Cheektowaga, NY 14225
(716) 684-8224

Mid-Atlantic Region
Charlotte, NC 28273
(704) 588-9920

Midwest Region
St. Louis, MO 63111
(314) 256-0833

Gulf Coast Region
Pasadena, TX 77503
(281) 930-7777

Connect with us:



www.jgbhose.com