



Your Hose & Fitting Connection

EAGLECRETE®



CONCRETE PUMPING & PLACEMENT PRODUCTS

www.jgbhose.com

Download the JGB® Mobile App



Connect with us:



www.jgbhose.com

CONCRETE HOSE & ACCESSORIES SUPPLIER

Hose Clamps

Concrete Pump Hose

Pump Hose Parts

Pump Hose Accessories

JGB Enterprises Inc. is the leading industrial hose supplier serving commercial customers nationwide since 1977. Our team of experienced concrete pump hose specialists strive to deliver the best service in the concrete pump and placement industry. JGB offers the highest quality of name brand concrete line pump hoses and concrete pump parts.

We provide a full range of concrete pump and placement products including, shotcrete nozzles, nozzle tips, grout hose, boom pipes, deck pipes, concrete elbows, steel reducers, concrete line pump hose, as well as an assortment of hose clamps in adjustable and non-adjustable styles. As we continue to expand our concrete pump line division and evolve to the needs of our customers as well as market demand... our goal is to deliver quick, stress free, smooth experiences and relationships our customers can depend on.



EAGLECRETE® 1233 HOSE



- Application:** 1233 psi plaster, grout and shotcrete material handling hose
Tube: Black Conductive Natural Rubber - Abrasion loss Value: According to DIN 53516 ≤ 60 mm³
Cover: NR/SBR Blend
Reinforcement: Spiral Textile
Couplings: Heavy Duty, Vic, NPT and Metric - Mtl Hardness: Rockwell C Scale 60 +/- 2
Temperature: -40°F to 180°F

Part #	ID	OD	Plies	WP	Burst	Weight lbs/ft
	in	in		psi	psi	
060-0242-1000	1 ½	2.20	4	1233	2465	1.07
060-0322-0800	2	2.76	4	1233	2465	1.43
060-0402-1000	2 ½	3.31	4	1233	2465	1.96
060-0482-1000	3	4.01	6	1233	2465	2.72
060-0562-1000	3 ½	4.64	6	1233	2465	3.51
060-0642-1000	4	5.12	6	1233	2465	3.96
060-0722-1000	4 ½	5.59	6	1233	2465	4.50
060-0802-1000	5	6.10	6	1233	2465	4.90

EAGLECRETE® 1300 HOSE



- Application:** 1300 psi cement & concrete material handling hose
Tube: Black Conductive Natural Rubber - Abrasion loss Value: According to DIN 53516 ≤ 60 mm³
Cover: NR/SBR Blend
Reinforcement: Spiral Wire
Couplings: Heavy Duty, Vic, NPT and Metric - Mtl Hardness: Rockwell C Scale 60 +/- 2
Temperature: -40°F to 180°F

Part #	ID	OD	Plies	WP	Burst	Weight lbs/ft
	in	in		psi	psi	
060-0322-1300	2	2.76	2	1300	2600	2.04
060-0402-1300	2 ½	3.46	4	1300	2600	3.01
060-0482-1300	3	4.02	4	1300	2600	3.67
060-4692-1300	4	5.12	4	1300	2600	5.69
060-4802-1300	5	6.10	4	1300	2600	6.47

EAGLE GUNITE 150 PSI HOSE



- Application:** Ultra wear resistant and thick tube, designed for high kink resistance and perfect flow, suitable for air pumping dry sand or cement mixtures to the water mixing nozzle in gunitite applications
- Tube:** ¼" Pure Gum Tan Rubber
- Cover:** Non marking Pure Gum Blend
- Reinforcement:** Multiple plies of synthetic fabric with an imbedded static wire
- Temperature:** -22°F to 185°F
- Branding:** Eagle Gunitite 150 PSI WP



Part #	ID	OD	WP	Burst	Weight	Std. Length
	in	in	psi	psi	lbs/ft	ft
014-0242-0150	1-1/2	2.38	150	450	1.17	100
014-0328-0150	2	2.88	150	450	1.46	100

EAGLE FLEXCRETE® MORTAR TPU HOSE (TRIMMY HOSE)

- Application:** Lay-flat boom tip hose ideal for ICF forms, columns and tall walls where space is at a minimum. (Trimmy Hose)
- Tube:** Extruded thermoplastic polyether based polyurethane (TPU)
- Cover:** Extruded TPU Yellow or Orange cover, bonded to lining
- Reinforcement:** Circular woven Aramid Fiber, "extra-strong yarn"
- Branding:** 4" EAGLE FLEXCRETE MORTAR TPU 1250 PSI WP
- Standard Couplings:** 1-Piece High Pressure Rapid Crimp, Heavy Duty



- Meets/Exceeds ASME Requirements
- 1/3 the weight
- Operator Friendly
- More consistent flow at lower placement rates
- Ease of pour in tight areas
- Bright color for visibility and safety
- Superior resistance to weather and aging
- Cleans up easily

JGB Enterprises Eagle FlexCrete is a new alternative in the concrete placement industry. The Eagle FlexCrete answers an industry need for a concrete placement hose that handles easily while placing ICF forms as well as tall walls and columns where space is limited. The Eagle FlexCrete's lay flat construction allows better flow control & lower placement rates than standard boom tip hoses.

Part #		ID	Wall	WP	Tensile Strength		Burst	Weight
Yellow	Orange	in	in	psi	x1000 lbs	Tons	psi	lbs/ft
008-0643-1250I	008-0644-1250I	4	0.17	1250	172	80	2500	1.34
*	008-0804-1250I	5	0.17	1250	179	81.5	2500	1.48



SLICK LINE PIPE

Slickline is welded or seamless steel tubing connected together at joints resulting in a horizontal or vertical pumping system.

Slickline pipes are provided in straight 10-foot lengths in various diameters from 2 to 6 inches. Slickline is manufactured from top grade high-carbon content steel tubing unlike ordinary pipe-stock

- Sold in various sizes and lengths
- **Size Range:** from 2" to 5"



Part #	Line Size	Thickness	Thickness	Material	Hardness
		Gauge	mm		
060-0320-SL10I	2" X 10'	11	3.05	Q345	HBS160-180
060-0400-SL10I	2.5" X 10'	11	3.05	Q345	HBS160-180
060-0480-SL10I	3" X 10'	11	3.05	Q345	HBS160-180
060-0640-SL10I	4" X 10'	9	3.8	Q345	HBS160-180
060-0800-SL10I	5" X 10'	.25"*	31.75	Q345	HBS160-180

* (Hardened)

BOOM & DECK PIPE

Sold in various sizes and lengths

SINGLE WALL				
Description	ID	Wall Thickness	Length (ft)	Hardness
DECK	4.8"/123.4mm	0.277"/7mm	10	58-60Rc
DECK	4.8"/123.4mm	0.277"/7mm	16	58-60Rc
BOOM	4.8"/123.4mm	0.188"/7ga	10	58-60Rc
BOOM	4.8"/123.4mm	0.188"/7ga	13	58-60Rc
BOOM	4.8"/123.4mm	0.188"/7ga	16	58-60Rc

DOUBLE WALL				
Description	ID	Wall Thickness	Length (ft)	Hardness
BOOM	4.8"/123.4mm	3mm+1.5mm	10	59-61 Rc
BOOM	4.8"/123.4mm	3mm+1.5mm	13	59-61 Rc
BOOM	4.8"/123.4mm	3mm+1.5mm	16	59-61 Rc
DECK	4.8"/123.4mm	4.5mm+3.0mm	10	59-61 Rc
DECK	4.8"/123.4mm	4.5mm+3.0mm	13	59-61 Rc

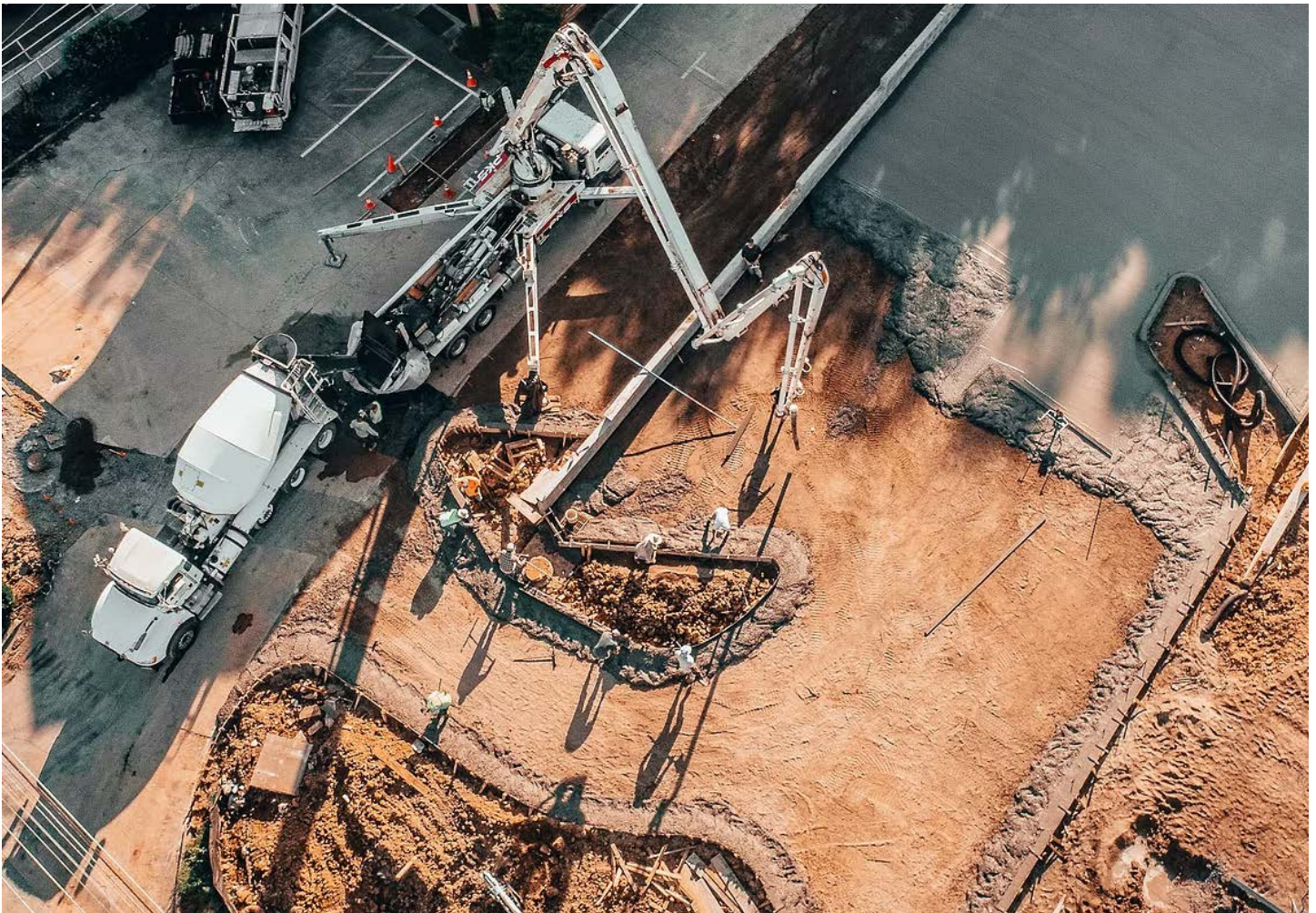
* Call for availability

STEEL REDUCERS

JGB sells steel reducers in sizes ranging from 6" down to 1-1/2". All pipes have handles and are available with heavy-duty or metric ends. They are constructed of **heat-treated ST52 Seamless Pipe Steel**.

Part #	Description
060-0400-0320I	2-1/2" HD X 2" HD X 36" REDUCER
060-0480-0320I	3" HD X 2" HD X 36" REDUCER
060-0480-0400I	3" HD X 2-1/2" HD X 36" REDUCER
060-0640-0320I	4" HD X 2" HD X 36" REDUCER
060-0640-0400I	4" HD X 2-1/2" HD X 36" REDUCER
060-0640-0480I	4" HD X 3" HD X 36" REDUCER
060-0801-0480I	5" METRIC X 3" HD X 36" REDUCER
060-0800-0480I	5" HD X 3" HD X 36" REDUCER
060-0800-0640I	5" HD X 4" HD X 36" REDUCER
060-0801-0640I	5" METRIC X 4" HD X 36" REDUCER

* Call for availability.



PIPE BENDS (SEAMLESS)

- Sold in various combinations
- 90° and 45° elbows available
- Grey & White
- **Size Range:** from 2" to 5"

* Other radius and terminations available

Part #	Description
060-0320-0090I	Pipe Bend 2"X90°X16", HD-HD RADIUS
060-0320-0090IL	Pipe Bend 2"X90°X48", HD-HD RADIUS-LONG
060-0400-0045I	Pipe Bend 2-1/2"X45° X16", HD-HD RADIUS
060-0400-0090I	Pipe Bend 2.5"X90°X16", HD-HD RADIUS
060-0480-0045I	Pipe Bend 3"X45°X16", HD-HD RADIUS
060-0480-0090I	Pipe Bend 3"X90°X16", HD-HD RADIUS
060-480-0090IL	Pipe Bend 3"X90°X48", HD-HD RADIUS-LONG
060-0640-0045I	Pipe Bend 4"X45°X18", HD-HD RADIUS
060-0640-0090I	Pipe Bend 4"X90°X18", HD-HD RADIUS
060-0640-0090IL	Pipe Bend 4"X90°X48", HD-HD RADIUS-LONG
060-0960-0090IL	Pipe Bend 5"X90°X48", HD-HD RADIUS-LONG



REDUCING ELBOWS (CASTING - HEAT TREATED)



Part #	Description	Material	Hardness
060-0640-9048I	4" HD x 3" HD REDUCING 90* ELBOW	Mn13-4	HBS260-290
060-0800-9048I	5" HD X 3" HD REDUCING 90* ELBOW	Mn13-4	HBS260-290
060-0800-9064I	5" HD X 4" HD REDUCING 90* ELBOW	Mn13-4	HBS260-290

* Call for availability

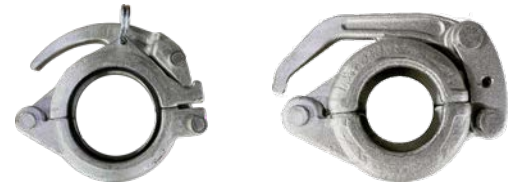
JGB also offers a wide range of Single & Double wall boom elbows.



ACCESSORIES

FORGED CONCRETE PUMP CLAMPS

- Galvanized Treated
- Heavy-duty, Vic, or Metric couplings for concrete pumping systems
- **Size Range:** from 1-1/2" to 5"



Galvanized	Part #	Description
Snap (non-adjustable)	060-0240-0000I	1-1/2" HD SNAP CLAMP W/ GASKET (FORGED) GALVANIZED
	060-0320-0000I	2" HD SNAP CLAMP W/ GASKET (FORGED) GALVANIZED
	060-0400-0000I	2-1/2" HD SNAP CLAMP W/ GASKET (FORGED) GALVANIZED
Adjustable	060-0480-0000I	3" ADJUSTABLE HD CLAMP W/ GASKET (FORGED) GALVANIZED
	060-0640-0000I	4" ADJUSTABLE HD CLAMP W/ GASKET (FORGED) GALVANIZED
	060-0800-0000I	5" ADJUSTABLE HD CLAMP W/ GASKET (FORGED) GALVANIZED

* Call for availability

CONCRETE CLAMP GASKETS (HD/Groove/Metric)

- Gaskets designed to be used with concrete pump clamps
- **Size Range:** from 1-1/2" to 6"



Gaskets	Part #	Description
HD	060-0240-GHDI	1-1/2' HD GASKET
	060-0320-GHDI	2' HD GASKET
	060-0400-GHDI	2-1/2' HD GASKET
	060-0480-GHDI	3' HD GASKET
	060-0640-GHDI	4' HD GASKET
	060-0800-GHDI	5' HD GASKET
Metric	060-0800-G MI	5' METRIC GASKET (V STYLE)

* Call for availability

CONCRETE WELD BLANKS

- Weld-on ends for cement & concrete hose
- **Size Range:** from 2" to 6"



* Weld Blanks	Part #	Description
HD	060-0320-WELDI	2" Weld On Blank
	060-0400-WELDI	2-1/2" Weld On Blank (HD)
	060-0480-WELDI	3" Weld On Blank (HD)
	060-0640-WELDI	4" Weld On Blank (HD)
	060-0800-WELDI	5" Weld On Blank (HD)

* Call for availability

CONCRETE CLEAN OUT BALLS

- Sponge Balls for cleaning
- (Soft, medium, or hard available)
- * **Size Range:** from 2" to 6"

Part #	Description
060-CB20MI	2" MED. CLEAN OUT BALL ORANGE
060-CB25MI	2-1/2" MED. CLEAN OUT BALL ORANGE
060-CB30MI	3" MED. CLEAN OUT BALL ORANGE
060-CB40MI	4" MED. CLEAN OUT BALL ORANGE
060-CB50MI	5" MED. CLEAN OUT BALL ORANGE
060-CB40HI	4" HARD CLEAN OUT BALL ORANGE
060-CB50HI	5" HARD CLEAN OUT BALL ORANGE

* Call for availability



SIDEWINDER BOOM PIPE WRAP

Sidewinder Boom Pipe Wrap uses the most advanced insulation and materials to protect pumping equipment and ready-mix properties. Boom Pipe Wrap installs in minutes and protects hoses or pipes from temperature drops, flash sets, and boom parties. A radiant liner attached to a non-breathable substrate maintains the concrete's optimal temperature, providing better workability during placement in both hot and cold climates. Built with military grade hook and loop closure, Sidewinder Ready Wrap is reusable, extremely lightweight, flexible, and compact.



PYTHON PUMP COVERS

Python's non-breathable ballistic fabric captures debris, big and small, mitigating the risk of property damage. Once captured, covers are designed specifically to dump material in a safe location.

On line pumps and boom trucks, concrete is drained downward for clean up or recycling. In high-rise applications, placing system covers connect over pipe clamps and direct captured material from one cover to the next by use of gravity.



See us also for...

SHOTCRETE NOZZLE ASSEMBLIES

Part No.	Description
Shot Assy 2.0	2.0" Shotcrete Nozzle Assembly Kit
HN20LS Tips	2.0"x1.25"x7" OAL Rubber Nozzle Only
HD Inserts	Steel Heat-Treated Insert w/ HD End
GR Inserts	Steel Heat-Treated Insert w/ GR End



EAGLE AIR® JACKHAMMER HOSE



- Designed for connection to pneumatic tools
- Pre-assembled

Tube: SBR + NR
Reinforcement: Spiral Polyester Yarn
Cover: EPDM
Temperature: -22°F to +176°F
Branding: 3/4" Eagle Air® JH 300PSI MAX WP #Q##
Couplings: Universal fitting at both ends
Oil Resistance: Limited

Part #	Color	ID	OD	WP	Burst	Standard Length ft	Reinforcement Spiral
		in	mm	psi	psi		
001-0121-0050I	Red	3/4	29.5	300	900	50	2
001-0123-0050I	Yellow	3/4	29.5	300	900	50	2

EAGLE AIR® WIRE REINFORCED HOSE



Application: Designed as heavy duty air hose for use in mines, construction and industrial applications where maximum service is required
Tube: Blend of synthetic elastomer compound, black, smooth, suitable for water and air, resistant to oil mist
Cover: Synthetic elastomer compound, yellow, smooth with cloth impression, weather, ozone and abrasion resistant
Reinforcement: Brass coated steel wire
Branding: EAGLE AIR® 600 PSI MAX WP
Temperature: -22°F to 200°F
Couplings: Female X Female Ground Joints

Part #	ID	OD	Plies	WP	Burst Pressure	Bend Radius	Lengths	Weight
	in	in	psi	psi	in	lbs/ft	ft.	
A003-0320-3050	2	2.6	2	600	2400	8	50	1.69
A003-0483-0051	3	3.7	2	600	2400	15	50	3.02
A003-0643-0050	4	4.8	2	600	2400	20	50	4.54

EAGLE CONTRACTOR'S WATER HOSE



- Designed as a traditional rubber water hose coupled with standard MxF Garden Hose Thread (GHT) solid brass fittings. This hose features a black PVC bend restrictor at female end to prevent kink and wear at hookup.

Tube: SBR + NR
Reinforcement: Spiral Polyester Yarn
Cover: EPDM
Temperature: -22°F to +176°F
Branding: EAGLE CWH CONTRACTORS WATER HOSE 200 PSI MAX WP #Q##

Part #	ID	WP	Length*	Weight	Color
	in	psi	ft	lbs/ft	
001-0102-0150I	5/8	200	50 coil	15	Black
001-0122-0150I	3/4	200	50 coil	20	Black

* Custom lengths available





Your Hose & Fitting Connection

Click for locations:



New England Region

115 Metropolitan Park Dr.
Liverpool, NY 13088
(315) 451-2770



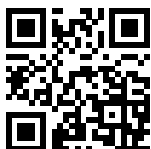
Great Lakes Region

2540 Walden Ave. Suite 150
Cheektowaga, NY 14225
(716) 684-8224



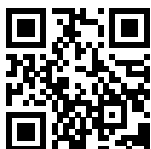
Midwest Region

242 Carondelet Commons Blvd.
St. Louis, MO 63111
(314) 256-0833



Mid-Atlantic Region

1407 Westinghouse Blvd. Suite B
Charlotte, NC 28273
(704) 588-9920



Gulf Coast Region

619 E Sam Houston Pkwy. Suite 200
Pasadena, TX 77503
(281) 930-7777

Liverpool Location ISO 9001:2015 Certified QMS by Intertek

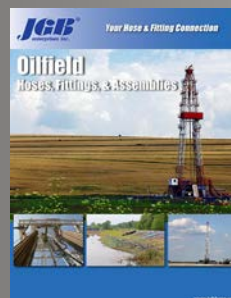
Additional Resources:



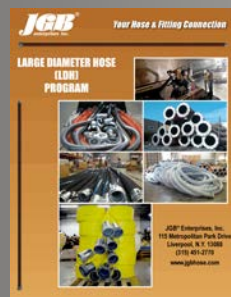
JGB Eagle Brand
Master Catalog



Industrial Rental Catalog
Hoses, Fittings & Assemblies



Oilfield Catalog
Hoses, Fittings & Assemblies



Large Diameter Hose
(LDH) Catalog



WARNING: Cancer and
Reproductive Harm -
www.P65Warnings.ca.gov