

Camlocks

PART A MALE CAMLOCK X FEMALE THREAD



Size	Aluminum	Stainless	Brass	Polypropylene
3/4"	AL-A075	SS-A075	BR-A075	PP-A075
1"	AL-A100	SS-A100	BR-A100	PP-A100
1-1/4"	AL-A125	SS-A125	BR-A125	PP-A125 †
1-1/2"	AL-A150	SS-A150	BR-A150	PP-A150
2"	AL-A200	SS-A200	BR-A200	PP-A200
2-1/2"	AL-A250	SS-A250	BR-A250	--
3"	AL-A300	SS-A300	BR-A300	PP-A300
4"	AL-A400	SS-A400	BR-A400	PP-A400
5"	AL-A500	--	--	--
6"	AL-A600	SS-A600	--	--
8"	AL-A800-1	--	--	--
8"	AL-A800-2	--	--	--

† 1-1/4" thread x 1-1/2" camlock

3/4" - 6" camlocks interchange with Mil Spec A-A59326A.

8" Camlocks

Type 1: PT Domestic, Dixon Global, Campbell, Kuri Import (Standard)

Type 2: Dixon Domestic, PT Import, Kuri HD801, Neco

PART B FEMALE CAMLOCK X MALE THREAD



Size	Aluminum	Stainless	Brass	Polypropylene
3/4"	AL-B075	SS-B075	BR-B075	PP-B075
1"	AL-B100	SS-B100	BR-B100	PP-B100
1-1/4"	AL-B125	SS-B125	BR-B125	PP-B125 †
1-1/2"	AL-B150	SS-B150	BR-B150	PP-B150
2"	AL-B200	SS-B200	BR-B200	PP-B200
2-1/2"	AL-B250	SS-B250	BR-B250	--
3"	AL-B300	SS-B300	BR-B300	PP-B300
4"	AL-B400	SS-B400	BR-B400	--
5"	AL-B500	--	--	--
6"	AL-B600	SS-B600	--	--
8"	AL-B800-1	--	--	--
8"	AL-B800-2	--	--	--

† 1-1/4" thread x 1-1/2" camlock

3/4" - 6" camlocks interchange with Mil Spec A-A59326A.

8" Camlocks

Type 1: PT Domestic, Dixon Global, Campbell, Kuri Import (Standard)

Type 2: Dixon Domestic, PT Import, Kuri HD801, Neco

BECAUSE WE CONTINUALLY EXAMINE WAYS TO IMPROVE OUR PRODUCTS, WE RESERVE THE RIGHT TO ALTER SPECIFICATIONS WITHOUT NOTICE.

PART C FEMALE CAMLOCK X HOSE SHANK



Size	Aluminum	Stainless	Brass	Polypropylene
3/4"	AL-C075	SS-C075	BR-C075	PP-C075
1"	AL-C100	SS-C100	BR-C100	PP-C100
1-1/4"	AL-C125	SS-C125	BR-C125	PP-C125 †
1-1/2"	AL-C150	SS-C150	BR-C150	PP-C150
2"	AL-C200	SS-C200	BR-C200	PP-C200
2-1/2"	AL-C250	SS-C250	BR-C250	--
3"	AL-C300	SS-C300	BR-C300	PP-C300
4"	AL-C400	SS-C400	BR-C400	PP-C400
5"	AL-C500	--	--	--
6"	AL-C600	SS-C600	--	--
8"	AL-C800-1	--	--	--
8"	AL-C800-2	--	--	--

† 1-1/4" barb x 1-1/2" camlock

3/4" - 6" camlocks interchange with Mil Spec A-A59326A.

8" Camlocks

Type 1: PT Domestic, Dixon Global, Campbell, Kuri Import (Standard)

Type 2: Dixon Domestic, PT Import, Kuri HD801, Neco

PART D FEMALE CAMLOCK X FEMALE THREAD



Size	Aluminum	Stainless	Brass	Polypropylene
3/4"	AL-D075	SS-D075	BR-D075	PP-D075
1"	AL-D100	SS-D100	BR-D100	PP-D100
1-1/4"	AL-D125	SS-D125	BR-D125	PP-D125 †
1-1/2"	AL-D150	SS-D150	BR-D150	PP-D150
2"	AL-D200	SS-D200	BR-D200	PP-D200
2-1/2"	AL-D250	SS-D250	BR-D250	--
3"	AL-D300	SS-D300	BR-D300	PP-D300
4"	AL-D400	SS-D400	BR-D400	PP-D400
5"	AL-D500	--	--	--
6"	AL-D600	SS-D600	--	--
8"	AL-D800-1	--	--	--
8"	AL-D800-2	--	--	--

† 1-1/4" thread x 1-1/2" camlock

3/4" - 6" camlocks interchange with Mil Spec A-A59326A.

8" Camlocks

Type 1: PT Domestic, Dixon Global, Campbell, Kuri Import (Standard)

Type 2: Dixon Domestic, PT Import, Kuri HD801, Neco

BECAUSE WE CONTINUALLY EXAMINE WAYS TO IMPROVE OUR PRODUCTS, WE RESERVE THE RIGHT TO ALTER SPECIFICATIONS WITHOUT NOTICE.

Camlocks

PART E MALE CAMLOCK X HOSE SHANK



Size	Aluminum	Stainless	Brass	Polypropylene
3/4"	AL-E075	SS-E075	BR-E075	PP-E075
1"	AL-E100	SS-E100	BR-E100	PP-E100
1-1/4"	AL-E125	SS-E125	BR-E125	PP-E125 †
1-1/2"	AL-E150	SS-E150	BR-E150	PP-E150
2"	AL-E200	SS-E200	BR-E200	PP-E200
2-1/2"	AL-E250	SS-E250	BR-E250	--
3"	AL-E300	SS-E300	BR-E300	PP-E300
4"	AL-E400	SS-E400	BR-E400	PP-E400
5"	AL-E500	--	--	--
6"	AL-E600	SS-E600	--	--
8"	AL-E800-1	--	--	--
8"	AL-E800-2	--	--	--

† 1-1/4" barb x 1-1/2" camlock

3/4" - 6" camlocks interchange with Mil Spec A-A59326A.

8" Camlocks

Type 1: PT Domestic, Dixon Global, Campbell, Kuri Import (Standard)

Type 2: Dixon Domestic, PT Import, Kuri HD801, Neco

PART F MALE CAMLOCK X MALE THREAD



Size	Aluminum	Stainless	Brass	Polypropylene
3/4"	AL-F075	SS-F075	BR-F075	PP-F075
1"	AL-F100	SS-F100	BR-F100	PP-F100
1-1/4"	AL-F125	SS-F125	BR-F125	PP-F125 †
1-1/2"	AL-F150	SS-F150	BR-F150	PP-F150
2"	AL-F200	SS-F200	BR-F200	PP-F200
2-1/2"	AL-F250	SS-F250	BR-F250	--
3"	AL-F300	SS-F300	BR-F300	PP-F300
4"	AL-F400	SS-F400	BR-F400	PP-F400
5"	AL-F500	--	--	--
6"	AL-F600	SS-F600	--	--
8"	AL-F800-1	--	--	--
8"	AL-F800-2	--	--	--

† 1-1/4" thread x 1-1/2" camlock

3/4" - 6" camlocks interchange with Mil Spec A-A59326A.

8" Camlocks

Type 1: PT Domestic, Dixon Global, Campbell, Kuri Import (Standard)

Type 2: Dixon Domestic, PT Import, Kuri HD801, Neco

BECAUSE WE CONTINUALLY EXAMINE WAYS TO IMPROVE OUR PRODUCTS, WE RESERVE THE RIGHT TO ALTER SPECIFICATIONS WITHOUT NOTICE.

PART DP DUST PLUG



Size	Aluminum	Stainless	Brass	Polypropylene
3/4"	AL-DP075	SS-DP075	BR-DP075	PP-DP075
1"	AL-DP100	SS-DP100	BR-DP100	PP-DP100
1-1/4"	AL-DP125	SS-DP125	BR-DP125	PP-DP150
1-1/2"	AL-DP150	SS-DP150	BR-DP150	PP-DP150
2"	AL-DP200	SS-DP200	BR-DP200	PP-DP200
2-1/2"	AL-DP250	SS-DP250	BR-DP250	--
3"	AL-DP300	SS-DP300	BR-DP300	PP-DP300
4"	AL-DP400	SS-DP400	BR-DP400	PP-DP400
5"	AL-DP500	--	--	--
6"	AL-DP600	SS-DP600	--	--
8"	AL-DP800-1	--	--	--
8"	AL-DP800-2	--	--	--

3/4" - 6" camlocks interchange with Mil Spec A-A59326A.

8" Camlocks

Type 1: PT Domestic, Dixon Global, Campbell, Kuri Import (Standard)

Type 2: Dixon Domestic, PT Import, Kuri HD801, Neco

PART DC DUST CAP



Size	Aluminum	Stainless	Brass	Polypropylene
3/4"	AL-DC075	SS-DC075	BR-DC075	PP-DC075
1"	AL-DC100	SS-DC100	BR-DC100	PP-DC100
1-1/4"	AL-DC125	SS-DC125	BR-DC125	PP-DC150
1-1/2"	AL-DC150	SS-DC150	BR-DC150	PP-DC150
2"	AL-DC200	SS-DC200	BR-DC200	PP-DC200
2-1/2"	AL-DC250	SS-DC250	BR-DC250	--
3"	AL-DC300	SS-DC300	BR-DC300	PP-DC300
4"	AL-DC400	SS-DC400	BR-DC400	PP-DC400
5"	AL-DC500	--	--	--
6"	AL-DC600	SS-DC600	--	--
8"	AL-DC800-1	--	--	--
8"	AL-DC800-2	--	--	--

3/4" - 6" camlocks interchange with Mil Spec A-A59326A.

8" Camlocks

Type 1: PT Domestic, Dixon Global, Campbell, Kuri Import (Standard)

Type 2: Dixon Domestic, PT Import, Kuri HD801, Neco

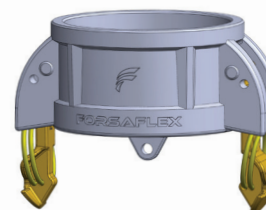
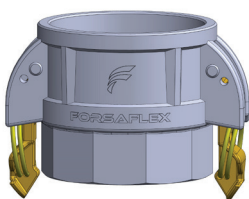
BECAUSE WE CONTINUALLY EXAMINE WAYS TO IMPROVE OUR PRODUCTS, WE RESERVE THE RIGHT TO ALTER SPECIFICATIONS WITHOUT NOTICE.

Camlocks

RING LOK



Size	Part B		Part C	
	Aluminum Part No.	Stainless Part No.	Aluminum Part No.	Stainless Part No.
1"	--	--	--	SS-C100-RL
1½"	--	--	--	SS-C150-RL
2"	AL-B200-RL	SS-B200-RL	AL-C200-RL	SS-C200-RL
3"	AL-B300-RL	SS-B300-RL	AL-C300-RL	SS-C300-RL
4"	AL-B400-RL	SS-B400-RL	AL-C400-RL	SS-C400-RL
6"	--	--	AL-C600-AL	--



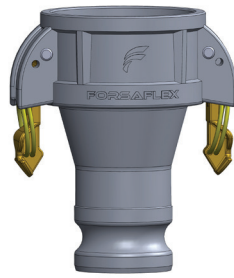
Size	Part D		Part DC	
	Aluminum Part No.	Stainless Part No.	Aluminum Part No.	Stainless Part No.
1"	--	SS-D100-RL	--	SS-DC100-RL
1½"	--	SS-D150-RL	--	SS-DC150-RL
2"	AL-D200-RL	SS-D200-RL	AL-DC200-RL	SS-DC200-RL
3"	AL-D300-RL	SS-D300-RL	AL-DC300-RL	SS-DC300-RL
4"	AL-D400-RL	SS-D400-RL	AL-DC400-RL	SS-DC400-RL
6"	AL-D600-RL	--	AL-DC600-RL	--



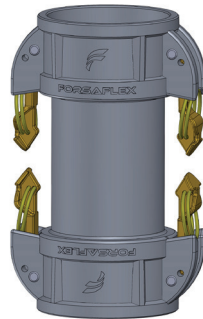
Size	Composite C Stainless Part No.
	2"
3"	CPSS-C300-RL
4"	CPSS-C400-RL

BECAUSE WE CONTINUALLY EXAMINE WAYS TO IMPROVE OUR PRODUCTS, WE RESERVE THE RIGHT TO ALTER SPECIFICATIONS WITHOUT NOTICE.

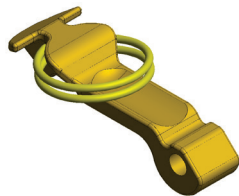
RING LOK



DA Adapter		
	Aluminum	Stainless
Size	Part No.	Part No.
3" x 2"	AL-DA3020-RL	SS-DA3020-RL
4" x 3"	AL-DA4030-RL	SS-DA4030-RL
6" x 4"	AL-DA6040-RL	--

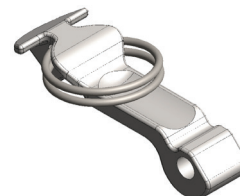


DD Adapter		
	Aluminum	Stainless
Size	Part No.	Part No.
2" x 2"	AL-DD2020-RL	SS-DD2020-RL
3" x 3"	AL-DD3030-RL	SS-DD3030-RL
4" x 4"	AL-DD4040-RL	SS-DD4040-RL



BRASS RING LOK HANDLE, RING & PIN

Part Number	Camlock Size
BR-HRP200-RL	2"
BR-HRP300-RL	3" - 4"
BR-HRP600-RL	6"



STAINLESS RING LOK HANDLE, RING & PIN

Part Number	Camlock Size
SS-HRP100-RL	1"
SS-HRP150-RL	1½"
SS-HRP200-RL	2"
SS-HRP300-RL	3" - 4"

BECAUSE WE CONTINUALLY EXAMINE WAYS TO IMPROVE OUR PRODUCTS, WE RESERVE THE RIGHT TO ALTER SPECIFICATIONS WITHOUT NOTICE.

Camlocks

DCL DUST CAP WITH - 90° DEGREE LOCK OUT HANDLES



ALUMINUM PART DCL

Part Number	Size
AL-DCL200	2"
AL-DCL300	3"
AL-DCL400	4"
AL-DCL600	6"

21

DA ADAPTER



ALUMINUM REDUCER

Part Number	Size
AL-DA2015	2" x 1-1/2"
AL-DA2030	2" x 3"
AL-DA2040	2" x 4"
AL-DA3020	3" x 2"
AL-DA3040	3" x 4"
AL-DA4020	4" x 2"
AL-DA4030	4" x 3"
AL-DA4060	4" x 6"
AL-DA6030	6" x 3"
AL-DA6040	6" x 4"

STAINLESS REDUCER

Part Number	Size
SS-DA3020	3" x 2"
SS-DA4020	4" x 2"
SS-DA4030	4" x 3"

DD ADAPTER



ALUMINUM REDUCER

Part Number	Size
AL-DD2020	2" x 2"
AL-DD3020	3" x 2"
AL-DD3030	3" x 3"
AL-DD4030	4" x 3"
AL-DD4040	4" x 4"

STAINLESS REDUCER

Part Number	Size
SS-DD2020	2" x 2"
SS-DD3020	3" x 2"
SS-DD3030	3" x 3"
SS-DD4030	4" x 3"
SS-DD4040	4" x 4"

AA ADAPTER



ALUMINUM REDUCER

Part Number	Size
AL-AA2015	2" x 1/2"
AL-AA2020	2" x 2"
AL-AA3020	3" x 2"
AL-AA3030	3" x 3"
AL-AA4020	4" x 2"
AL-AA4030	4" x 3"
AL-AA4040	4" x 4"
AL-AA6040	6" x 4"

STAINLESS REDUCER

Part Number	Size
SS-AA2020	2" x 2"
SS-AA3020	3" x 2"
SS-AA3030	3" x 3"
SS-AA4030	4" x 3"
SS-AA4040	4" x 4"
SS-AA6040	6" x 4"

BECAUSE WE CONTINUALLY EXAMINE WAYS TO IMPROVE OUR PRODUCTS, WE RESERVE THE RIGHT TO ALTER SPECIFICATIONS WITHOUT NOTICE.

CAMLOCK ADAPTERS



FLANGE ADAPTER X MALE

Part Number		Size
Aluminum	Stainless	
AL-FLA200	SS-FLA200	2"
AL-FLA300	SS-FLA300	3"
AL-FLA400	SS-FLA400	4"
AL-FLA600	SS-FLA600	6"
AL-FLA800-1	SS-FLA800-1	8"

- Gaskets and bolt kits available on page 190.



FLANGE ADAPTER X FEMALE

Part Number		Size
Aluminum	Stainless	
AL-FLD200	SS-FLD200	2"
AL-FLD300	SS-FLD300	3"
AL-FLD400	SS-FLD400	4"
AL-FLD600	SS-FLD600	6"

- Gaskets and bolt kits available on page 190.



45° ADAPTER

Part Number	Size F x M
AL-DA3030-45	3" x 3"
AL-DA4040-45	4" x 4"
AL-DA6060-45	6" x 6"



90° ADAPTER

Part Number	Size F x M
AL-DA3030-90	3" x 3"
AL-DA4040-90	4" x 4"
AL-DA6060-90	6" x 6"



Y ADAPTER

Part Number	Size
AL-DAA404040-Y*	4" x 4"
AL-DAA606060-Y*	6" x 6"

* Special Order



LOCK PIN & S-HOOK CHAIN

Description	Part Number
Camlock Safety Lock Pin	CSLP
6" Chain with S-Hook	CSC-6
12" Chain with S-Hook	CSC-12



STAINLESS HANDLE, RING & PIN

Part Number	Camlock Size
SS-HRP075	1/2" - 3/4"
SS-HRP100	1"
SS-HRP200	1 1/2" - 2 1/2"
SS-HRP300	3" - 4"
SS-HRP600	6"

BRASS HANDLE, RING & PIN

Part Number	Camlock Size
BR-HRP075	1/2" - 3/4"
BR-HRP100	1"
BR-HRP200	1 1/2" - 2 1/2"
BR-HRP300	3" - 4"
BR-HRP600	6"



90° DEGREE STAINLESS HANDLE, RING & PIN

Part Number	Camlock Size
SS-HRP200-LH	2"
SS-HRP300-LH	3" - 4"
SS-HRP600-LH	6"

BECAUSE WE CONTINUALLY EXAMINE WAYS TO IMPROVE OUR PRODUCTS, WE RESERVE THE RIGHT TO ALTER SPECIFICATIONS WITHOUT NOTICE.

Camlocks

SAFETY BUMPS



SAFETY BUMP DUST CAP

Part Number	Size
SBDC-200	2"
SBDC-300	3"
SBDC-400	4"
SBDC-200-AL	2"
SBDC-300-AL	3"
SBDC-400-AL	4"



SAFETY BUMP DUST PLUG

Part Number	Size
SBDP-200	2"
SBDP-300	3"
SBDP-400	4"
SBDP-200-AL	2"
SBDP-300-AL	3"
SBDP-400-AL	4"



FOOD GRADE SAFETY BUMP DUST CAP

Part Number	Size
SBDC-200WH	2"
SBDC-300WH	3"
SBDC-400WH	4"



FOOD SAFETY BUMP DUST PLUG

Part Number	Size
SBDP-200WH	2"
SBDP-300WH	3"
SBDP-400WH	4"



SAFETY LOCKS

Part Number	Size	Colour
SL-200	2"	Blue
SL-300	3"	Red
SL-400	4"	Orange



STAINLESS STEEL STRAINER DISC

Part Number	Size
SDS-200	2"
SDS-300	3"
SDS-400	4"

ALUMINUM STRAINER DISC

Part Number	Size
SDA-200	2"
SDA-300	3"
SDA-400	4"

This Strainer has 1/4" holes and threads into female NPT threads.

SIGHT GLASS



Part Number	Size
SIGHT-200	2"
SIGHT-300	3"
SIGHT-400	4"



Part Number	Size
TTF40SG	4"

CAMLOCK SAFETY STRAPS



Part Number	Length	Camlock Size
CGVS-19	19"	2" - 3"
CGVS-30	30"	4" - 6"

The highly visible 1-1/2" wide fluorescent orange safety straps secures camlock arms down or bundles hose together.

BECAUSE WE CONTINUALLY EXAMINE WAYS TO IMPROVE OUR PRODUCTS, WE RESERVE THE RIGHT TO ALTER SPECIFICATIONS WITHOUT NOTICE.

CAMLOCK GASKETS



	Black NBR	Extra Thick NBR	Hot Oil	Teflon/Buna Envelope	Viton
TEMP.	-40°F to 200°F	-40°F to 200°F	-55°F to 325°F	-40°F to 200°F	-30°F to 400°F
Size	Part Number	Part Number	Part Number	Part Number	Part Number
¾"	CGS-075	--	--	CGTB-075	CGVT-075
1"	CGS-100	--	--	CGTB-100	CGVT-100
1-¼"	CGS-125	--	--	CGTB-125	CGVT-125
1-½"	CGS-150	--	--	CGTB-150	CGVT-150
2"	CGS-200	CGST-200	CGS-200-HO	CGTB-200	CGVT-200
2-½"	CGS-250	--	--	CGTB-250	CGVT-250
3"	CGS-300	CGST-300	CGS-300-HO	CGTB-300	CGVT-300
4"	CGS-400	CGST-400	CGS-400-HO	CGTB-400	CGVT-400
5"	CGS-500	--	--	--	--
6"	CGS-600	CGST-600	--	--	--
8"	CGS-800	--	--	--	--

Maximum Working Pressure Ratings for Camlock Couplers @ 20°C / 70°F with NBR Gaskets					
Size	Ring Lock	Aluminum	Stainless	Brass	Polypropylene
¾"	--	200	200	200	100
1"	250	200	200	200	100
1-¼"	--	200	200	200	100
1-½"	--	200	200	200	100
2"	250	200	200	200	100
2-½"	--	150	150	150	--
3"	150	125	125	125	75
4"	150	100	100	100	60
5"	--	75	75	--	--
6"	100	75	75	75	--
8"	--	50	--	--	--

⚠ WARNING!

• CAMLOCK COUPLINGS SHOULD NEVER BE USED FOR COMPRESSED AIR, GASES OR STEAM.

BECAUSE WE CONTINUALLY EXAMINE WAYS TO IMPROVE OUR PRODUCTS, WE RESERVE THE RIGHT TO ALTER SPECIFICATIONS WITHOUT NOTICE.