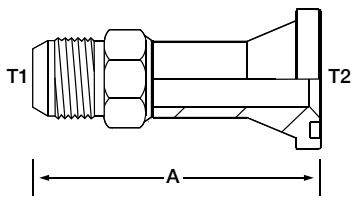
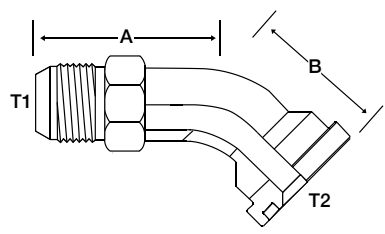


1700 MJ - Flange (61)



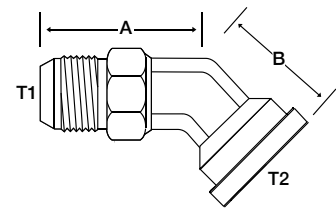
Part Number	T1	T2
	MJIC	Code 61
1700-0808	3/4 - 16	1/2
1700-0812	3/4 - 16	3/4
1700-1212	1 1/16 - 12	3/4
1700-1216	1 1/16 - 12	1
1700-1220	1 1/16 - 12	1 1/4
1700-1612	1 5/16 - 12	3/4
1700-1616	1 5/16 - 12	1
1700-1620	1 5/16 - 12	1 1/4
1700-1624	1 5/16 - 12	1 1/2
1700-2016	1 5/8 - 12	1
1700-2020	1 5/8 - 12	1 1/4
1700-2024	1 5/8 - 12	1 1/2
1700-2032	1 5/8 - 12	2
1700-2420	1 7/8 - 12	1 1/4
1700-2424	1 7/8 - 12	1 1/2
1700-2432	1 7/8 - 12	2
1700-3224	2 1/2 - 12	1 1/2
1700-3232	2 1/2 - 12	2

1703 MJ - Flange (61) 45°



Part Number	T1	T2
	MJIC	Code 61
1703-0808	3/4 - 16	1/2
1703-0812	3/4 - 16	3/4
1703-1212	1 1/16 - 12	3/4
1703-1216	1 1/16 - 12	1
1703-1220	1 1/16 - 12	1 1/4
1703-1612	1 5/16 - 12	3/4
1703-1616	1 5/16 - 12	1
1703-1620	1 5/16 - 12	1 1/4
1703-1624	1 5/16 - 12	1 1/2
1703-2012	1 5/8 - 12	3/4
1703-2016	1 5/8 - 12	1
1703-2020	1 5/8 - 12	1 1/4
1703-2024	1 5/8 - 12	1 1/2
1703-2420	1 7/8 - 12	1 1/4
1703-2424	1 7/8 - 12	1 1/2
1703-2432	1 7/8 - 12	2
1703-3232	2 1/2 - 12	2

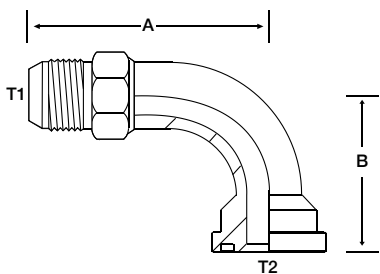
1703FG MJ - Flange (61) 45° Forged



Part Number	T1	T2
	MJIC	Code 61
1703-1212FG	1 1/16 - 12	3/4
1703-1616FG	1 5/16 - 12	1
1703-2020FG	1 5/8 - 12	1 1/4
1703-2424FG	1 7/8 - 12	1 1/2
1703-3232FG	2 1/2 - 12	2

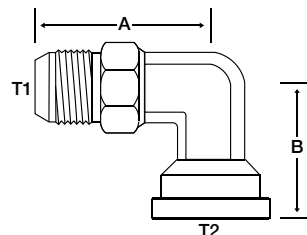
BECAUSE WE CONTINUALLY EXAMINE WAYS TO IMPROVE OUR PRODUCTS, WE RESERVE THE RIGHT TO ALTER SPECIFICATIONS WITHOUT NOTICE.

1704 MJ - Flange (61) 90°



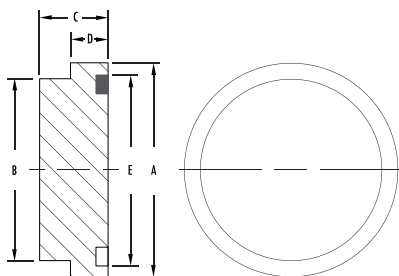
Part Number	T1	T2
	MJIC	Code 61
1704-0808	3/4 - 16	1/2
1704-0812	3/4 - 16	3/4
1704-1212	1 1/16 - 12	3/4
1704-1216	1 1/16 - 12	1
1704-1220	1 1/16 - 12	1 1/4
1704-1612	1 5/16 - 12	3/4
1704-1616	1 5/16 - 12	1
1704-1620	1 5/16 - 12	1 1/4
1704-1624	1 5/16 - 12	1 1/2
1704-2016	1 5/8 - 12	1
1704-2020	1 5/8 - 12	1 1/4
1704-2024	1 5/8 - 12	1 1/2
1704-2420	1 7/8 - 12	1 1/4
1704-2424	1 7/8 - 12	1 1/2
1704-2432	1 7/8 - 12	2
1704-3224	2 1/2 - 12	1 1/2
1704-3232	2 1/2 - 12	2

1704FG MJ - Flange (61) 90° Forged



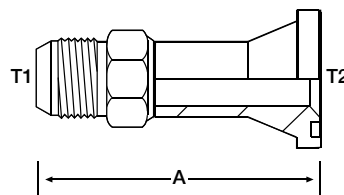
Part Number	T1	T2
	MJIC	Code 61
1704-0812FG	3/4 - 16	3/4
1704-1212FG	1 1/16 - 12	3/4
1704-1216FG	1 1/16 - 12	1
1704-1612FG	1 5/16 - 12	3/4
1704-1616FG	1 5/16 - 12	1
1704-1620FG	1 5/16 - 12	1 1/4
1704-2016FG	1 5/8 - 12	1
1704-2020FG	1 5/8 - 12	1 1/4
1704-2024FG	1 5/8 - 12	1 1/2
1704-2424FG	1 7/8 - 12	1 1/2
1704-2432FG	1 7/8 - 12	2
1704-3224FG	2 1/2 - 12	1 1/2
1704-3232FG	2 1/2 - 12	2

1724 Flange (61) Plug



Part Number	A	B	D
1724-08	1.188	.924	.265
1724-12	1.500	1.234	.265
1724-16	1.750	1.484	.315
1724-20	2.000	1.684	.315
1724-24	2.375	1.964	.315
1724-32	2.810	2.434	.375
1724-40	3.312	2.904	.375
1724-48	4.000	3.534	.375

1800 MJ - Flange (62)

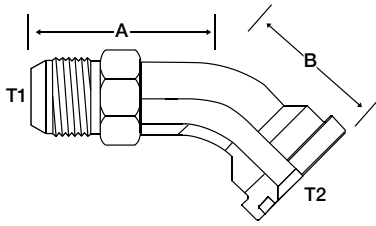


Part Number	T1	T2
	MJIC	Code 61
1800-0808	3/4 - 16	1/2
1800-1212	1 1/16 - 12	3/4
1800-1216	1 1/16 - 12	1
1800-1612	1 5/16 - 12	3/4
1800-1616	1 5/16 - 12	1
1800-1620	1 5/16 - 12	1 1/4
1800-1624	1 5/16 - 12	1 1/2
1800-2016	1 5/8 - 12	1
1800-2020	1 5/8 - 12	1 1/4
1800-2024	1 5/8 - 12	1 1/2
1800-2420	1 7/8 - 12	1 1/4
1800-2424	1 7/8 - 12	1 1/2
1800-3232	2 1/2 - 12	2

BECAUSE WE CONTINUALLY EXAMINE WAYS TO IMPROVE OUR PRODUCTS, WE RESERVE THE RIGHT TO ALTER SPECIFICATIONS WITHOUT NOTICE.

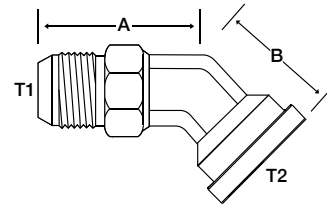
JIC and Pipe

1803 MJ - Flange (62) 45°



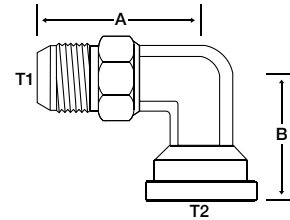
Part Number	T1	T2
	MJIC	Code 62
1803-0808	3/4 - 16	1/2
1803-1212	1 1/16 - 12	3/4
1803-1216	1 1/16 - 12	1
1803-1612	1 5/16 - 12	3/4
1803-1616	1 5/16 - 12	1
1803-1620	1 5/16 - 12	1 1/4
1803-1624	1 5/16 - 12	1 1/2
1803-2016	1 5/8 - 12	1
1803-2020	1 5/8 - 12	1 1/4
1803-2024	1 5/8 - 12	1 1/2
1803-2424	1 7/8 - 12	1 1/2
1803-3232	2 1/2 - 12	2

1803FG MJ - Flange (62) 45° Forged



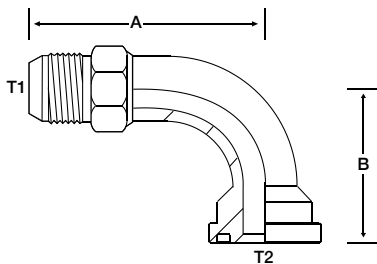
Part Number	T1	T2
	MJIC	Code 62
1803-1212FG	1 1/16 - 12	3/4
1803-1616FG	1 5/16 - 12	1
1803-2020FG	1 5/8 - 12	1 1/4
1803-2424FG	1 7/8 - 12	1 1/2
1803-3232FG	2 1/2 - 12	2

1804FG MJ - Flange (62) 90° Forged



Part Number	T1	T2
	MJIC	Code 62
1804-0808FG	3/4 - 16	1/2
1804-0812FG	3/4 - 16	3/4
1804-1212FG	1 1/16 - 12	3/4
1804-1216FG	1 1/16 - 12	1
1804-1612FG	1 5/16 - 12	3/4
1804-1616FG	1 5/16 - 12	1
1804-1620FG	1 5/16 - 12	1 1/4
1804-2016FG	1 5/8 - 12	1
1804-2020FG	1 5/8 - 12	1 1/4
1804-2024FG	1 5/8 - 12	1 1/2
1804-2420FG	1 7/8 - 12	1 1/4
1804-2424FG	1 7/8 - 12	1 1/2
1804-2432FG	1 7/8 - 12	2
1804-3224FG	2 1/2 - 12	1 1/2
1804-3232FG	2 1/2 - 12	2

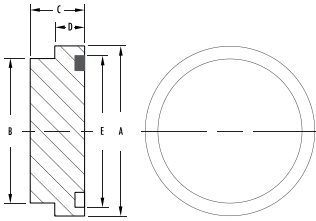
1804 MJ - Flange (62) 90°



Part Number	T1	T2
	MJIC	Code 62
1804-0808	3/4 - 16	1/2
1804-1212	1 1/16 - 12	3/4
1804-1616	1 5/16 - 12	1
1804-1620	1 5/16 - 12	1 1/4
1804-1624	1 5/16 - 12	1 1/2
1804-2016	1 5/8 - 12	1
1804-2020	1 5/8 - 12	1 1/4
1804-2024	1 5/8 - 12	1 1/2
1804-2416	1 7/8 - 12	1
1804-2420	1 7/8 - 12	1 1/4
1804-2424	1 7/8 - 12	1 1/2
1804-3232	2 1/2 - 12	2

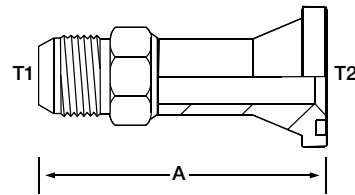
BECAUSE WE CONTINUALLY EXAMINE WAYS TO IMPROVE OUR PRODUCTS, WE RESERVE THE RIGHT TO ALTER SPECIFICATIONS WITHOUT NOTICE.

1824 Flange (62) Plug



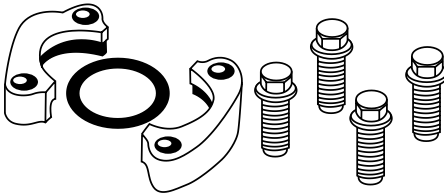
Part Number	A	B	D
1824-12	1.625	1.234	.345
1824-16	1.875	1.484	.375
1824-20	2.125	1.704	.405
1824-24	2.500	1.984	.495
1824-32	3.125	2.604	.495

1850 MJ - Flange CAT



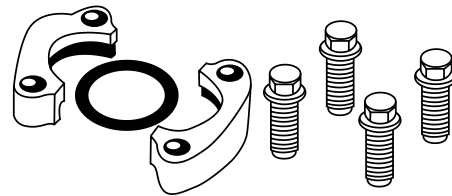
Part Number	T1	T2
	MJIC	CAT
1850-1212	1 ¹ / ₁₆ - 12	3/4
1850-1616	1 ¹ / ₁₆ - 12	1
1850-2020	1 ⁵ / ₁₆ - 12	1 ¹ / ₄
1850-2424	1 ⁷ / ₁₆ - 12	1 ¹ / ₂

1901 Split Flange Kit (61)



Part Number	Size
	Code 61
1901-08-K	1/2
1901-12-K	3/4
1901-16-K	1
1901-20-K	1 ¹ / ₄
1901-24-K	1 ¹ / ₂
1901-32-K	2
1901-40-K	2 ¹ / ₂
1901-48-K	3
1901-56-K	3 ¹ / ₂
1901-64-K	4

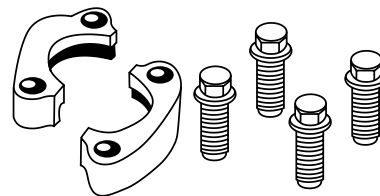
1902 Split Flange Kit (62)



Part Number	Size
	Code 62
1902-08-K	1/2
1902-12-K	3/4
1902-16-K	1
1902-20-K	1 ¹ / ₄
1902-24-K	1 ¹ / ₂
1902-32-K	2

1903 Split Flange Kit (Cat)

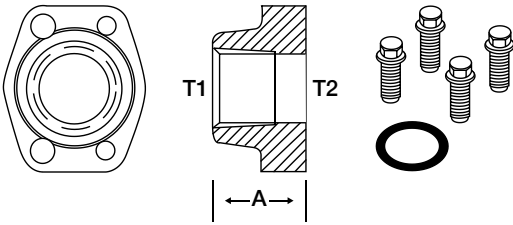
D-ring not included.



Part Number	Size
	CAT
1903-08-K	1/2
1903-12-K	3/4
1903-16-K	1
1903-20-K	1 ¹ / ₄
1903-24-K	1 ¹ / ₂
1903-32-K	2

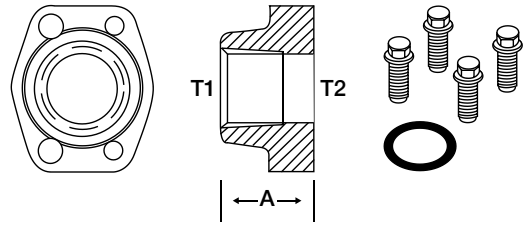
BECAUSE WE CONTINUALLY EXAMINE WAYS TO IMPROVE OUR PRODUCTS, WE RESERVE THE RIGHT TO ALTER SPECIFICATIONS WITHOUT NOTICE.

1927 FP - Flange Kit (61)



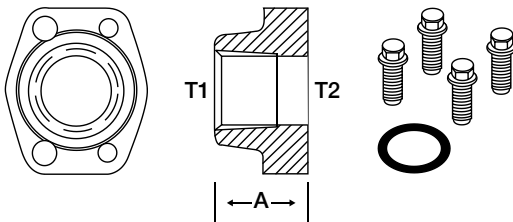
Part Number	T1	T2
	FNPT	Code 61
1927-1212-K	3/4 - 14	3/4
1927-1616-K	1 - 11 1/2	1
1927-2020-K	1 1/4 - 11 1/2	1 1/4
1927-2424-K	1 1/2 - 11 1/2	1 1/2
1927-3232-K	2 - 11 1/2	2
1927-4040-K	2 1/2 - 8	2 1/2
1927-4848-K	3 - 8	3
1927-6464-K	4 - 8	4

1928 FP - Flange Kit (62)



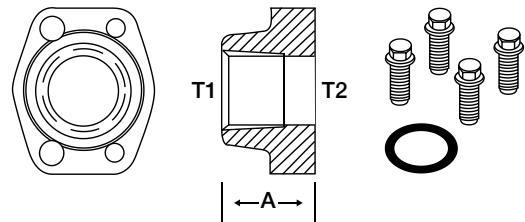
Part Number	T1	T2
	FNPT	Code 62
1928-1212-K	3/4 - 14	3/4
1928-1616-K	1 - 11 1/2	1
1928-2020-K	1 1/4 - 11 1/2	1 1/4
1928-2424-K	1 1/2 - 11 1/2	1 1/2
1928-3232-K	2 - 11 1/2	2
1928-4040-K	2 1/2 - 8	2 1/2
1928-4848-K	3 - 8	3

1929-61 FORB - Flange Kit (61)



Part Number	T1	T2
	FORB	Code 61
1929-61-1212-K	1 1/16 - 12	3/4
1929-61-1616-K	1 5/16 - 12	1
1929-61-2020-K	1 5/8 - 12	1 1/4
1929-61-2424-K	1 7/8 - 12	1 1/2
1929-61-3232-K	2 1/2 - 12	2

1929-62 FORB - Flange Kit (62)



Part Number	T1	T2
	FORB	Code 62
1929-62-1212-K	1 1/16 - 12	3/4
1929-62-1616-K	1 5/16 - 12	1
1929-62-2020-K	1 5/8 - 12	1 1/4
1929-62-2424-K	1 7/8 - 12	1 1/2
1929-62-3232-K	2 1/2 - 12	2

BECAUSE WE CONTINUALLY EXAMINE WAYS TO IMPROVE OUR PRODUCTS, WE RESERVE THE RIGHT TO ALTER SPECIFICATIONS WITHOUT NOTICE.