

DMR100



Capacity:

Braided Hose: -3 thru -16
4 Wire Hose: -6 thru -12

Power Source: Not included

Available Source:

Pump-01 10,000 PSI Handpump
Pump-02 10,000 PSI Electric (110v)
Pump-03 10,000 PSI Air/Hydraulic

Dimensions: 12.5" D, 12.5" W, 21.5" H

Weight: 48 lbs.

Dies Included: None

Available Dies:

Dies	Color	Dies	Color
DR100-07	Black	DR100-23	Yellow
DR100-09	Black	DR100-27	Brown
DR100-12	Black	DR100-31	Silver
DR100-14	Black	DR100-39	Red
DR100-16	Blue	DR100-41	Orange
DR100-19	Green	DR100-48	Black

DMR165-SE



Capacity:

Braided Hose: -3 thru -20
4 Wire Hose: -6 thru -20
6 Wire Hose: -12 thru -16

Power Source: 1-HP, 110V AC, single phase

Dimensions: 22.5" D, 13" W, 27.5" H

Weight: 154 lbs.

Dies Included: None



Die

Cage

Replacement Parts:

- 100813:** Pusher - DMR100
- 100825:** Pusher - DMR165
- 104651:** Top press plate - DMR100
- 103270:** Top press plate - DMR165
- 104662:** Top press plate notched - DMR165
- 101349:** Pneumatic Start/Stop Switch
- 104162:** High-pressure grease in a 3 oz. tube

- Pump-01:** Two Stage Hand Pump
- Pump-02:** 1.5 HP, 110V Electric Pump
- Pump-03:** Air/Hydraulic Pump
- Shelf-01:** Die storage shelf



Notched

Press Plate

Shelf

BECAUSE WE CONTINUALLY EXAMINE WAYS TO IMPROVE OUR PRODUCTS, WE RESERVE THE RIGHT TO ALTER SPECIFICATIONS WITHOUT NOTICE.

DM205



Capacity:

Braided Hose: -3 thru -20
 4 Wire Hose: -6 thru -20
 6 Wire Hose: -12 thru -20

Power Source: 2-HP, 220V AC, single phase

Dimensions: 32" D, 17" W, 29" H

Weight: 305 lbs.

Dies Included: 16mm, 19mm, 23mm, 31mm, 39mm

DM206



Capacity:

Braided Hose: -3 thru -20
 4 Wire Hose: -6 thru -20
 6 Wire Hose: -12 thru -20

Power Source: 1-HP, 110V AC, single phase

Dimensions: 32" D, 17" W, 29" H

Weight: 305 lbs.

Dies Included: 16mm, 19mm, 23mm, 31mm, 39mm

Standard Dies:

D200-16
 D200-19
 D200-23
 D200-31
 D200-39

Optional Dies:

D200-08
 D200-10
 D200-12
 D200-14
 D200-27
 D200-34
 D200-48

Replacement Parts:

- D200-Screw:** Die Screw
- D200-Die Spring:** Die Spring
- D200-Die Ring:** Die Ring
- D200-Pusher:** Pusher
- 100712:** Top press plate
- 101349:** Pneumatic start/stop switch
- 104162:** High-pressure grease in a 3 oz. tube
- Shelf-02:** Die storage shelf



Screws & Springs



Die



Shelf

BECAUSE WE CONTINUALLY EXAMINE WAYS TO IMPROVE OUR PRODUCTS, WE RESERVE THE RIGHT TO ALTER SPECIFICATIONS WITHOUT NOTICE.

FT1380-115-5

The FT1380 crimps all your hose needs up to and including -16 spiral wire hose. The FT1380 is electronically controlled to give fast, accurate crimps the first time and every time you need a hose assembly. The electronic keypad is easy to adjust, with up to 10 programmable crimp settings. For those hose styles used less frequently, simply enter the 3 digit code of that hose.



Capacity:

Braided Hose: -3 thru -16

4 Wire Hose: -6 thru -16

6 Wire Hose: -12 thru -16

Power Source: 1.5-HP, 115V AC, single phase

Dimensions: 19.5" D, 12.5" W, 28.5" H

Weight: 238 lbs.

Die Included: M150, M210, M240, M320, M370

Dies:

FT1380-200-M150

FT1380-200-M180

FT1380-200-M210

FT1380-200-M240

FT1380-200-M320

FT1380-200-M370

FT1380-200-M420

FT1380-200-M465

FT1382-200-M465(Long)

Replacement Parts:

FT1380-2-4: Die Holder

FT1380-2-9: Die Cage Repair Kit

FT1380-2-9-21: Die Spring (16pcs)

FT1380-3-3: Rocker Switch



Die

FC100-AP

**Capacity:**

Braided Hose: -3 thru -16
4 Wire Hose: -6 thru -16

Power Source: Air/hydraulic

Dimensions: 9" D, 10" W, 12.5" H

Weight: 57 lbs

Dies Included: 16mm, 19mm, 23mm, 27mm, 31mm, 37mm

FC100-HP

**Capacity:**

Braided Hose: -3 thru -16
4 Wire Hose: -6 thru -16

Power Source: Hand pump

Dimensions: 9" D, 10" W, 12.5" H

Weight: 57 lbs

Dies Included: 16mm, 19mm, 23mm, 27mm, 31mm, 37mm

Standard Dies:

FC100-D16
FC100-D19
FC100-D23
FC100-D27
FC100-D31
FC100-D37

Optional Dies:

FC100-D08
FC100-D10
FC100-D12
FC100-D14



Die

FC200

The FC200 series 2" crimper is a stable and reliable workshop crimper. The digital control panel is simple & user friendly.



Capacity:

Braided Hose: -3 thru -32
 4 Wire Hose: -6 thru -32
 6 Wire Hose: -6 thru -24

Power Source:

2-HP, 220V AC, 3 phase

Dimensions: 26" D, 24" W, 55" H

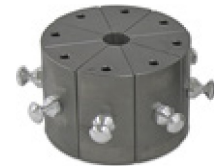
Weight: 594 lbs.

Dies Included:

FC200-D12	12mm
FC200-D14	14mm
FC200-D16	16mm
FC200-D19	19mm
FC200-D23	23mm
FC200-D26	26mm
FC200-D30	30mm
FC200-D34	34mm
FC200-D39	39mm
FC200-D48	48mm
FC200-D56	56mm
FC200-D69	69mm

Optional Dies:

FC200-D08	8mm
FC200-D10	10mm



Die

Replacement Parts:

P32-Pin
 FC200-QC-Tool



Pin



Quick Change Tool

FC400

The FC400 series 4" crimper is a stable and reliable workshop crimper. The digital control panel is simple & user friendly.



Capacity:

Braided Hose: -3 thru -32
4 Wire Hose: -6 thru -32
6 Wire Hose: -6 thru -32
Industrial Hose: 1/4" thru 4"

Power Source:

FC400: 7 HP, 230V, 3 phase

Dimensions: 39" D, 40" W, 63" H

Weight: 2,970 lbs.

Dies Included:

FC200-D12	12mm
FC200-D14	14mm
FC200-D16	16mm
FC200-D19	19mm
FC200-D23	23mm
FC200-D26	26mm
FC200-D30	30mm
FC200-D34	34mm
FC200-D39	39mm
FC200-D45	45mm
FC200-D51	51mm
FC200-D57	57mm
FC200-D63	63mm
FC200-D69	69mm
FC200-D74	74mm
FC200-D80	80mm
FC200-D89	89mm
FC200-D109	109mm
FC200-D119	119mm

Optional Dies:

FC200-D08	8mm
FC200-D10	10mm



Die

Replacement Parts:

P32-Pin
FC200-QC-Tool



Pin



Quick Change Tool

Air Conditioning Portable Crimper



Part Number: FC-AC100

Description: Air conditioning crimper is designed for crimping ZN air conditioning hose with Z series couplings. Dies included with the crimper have capability to crimp -6, -8, -10, and -12 assemblies.

Features:

- Portable hand operation.
- Bubble crimp.
- Does not require tools to change die sizes.
- Lightweight for easy handling, less than six pounds.
- Includes seven colour-coded die sets.
- No electrical requirement.